



CURTIS

Instrumentation



Digital Instrumentation: CAN

enGage® III Model 3100T





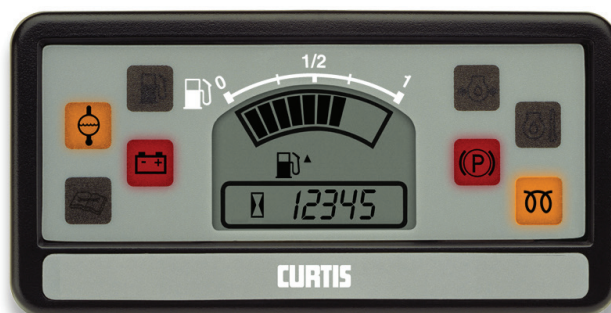
Digital Instrumentation: CAN

The Curtis enGage® Model 3100T is a microprocessor based instrument that monitors and displays operating and performance parameters critical to industrial vehicles. The gauge is fully compatible with CAN (Open, J1939) controller area network protocol. Industrial and commercial vehicles including: material handling, aerial lifts, commercial cleaning equipment. Ideally suited for off highway construction equipment and monitoring scheduled maintenance, warranty and leasing intervals.

FEATURES

- ▶ Interfaces directly and seamlessly with Curtis CAN enabled vehicle and motor controllers and displays various system parameters.
- ▶ Attractive, easy-to-read, Liquid Crystal Display with optional backlighting for enhanced viewing in all lighting conditions.
- ▶ LCD contains bar graph and alpha numeric sections for viewing operational status and system codes.
- ▶ Can be used with any CAN enabled network.
- ▶ Requires substantially less wiring than a non-CAN version, while providing increased access to system information.
- ▶ Standard models display hours of use, battery state-of-charge and messages from vehicle/motor controller.
- ▶ Easy access to vehicle controller status and system parameters.
- ▶ Flexible output modes include flashing LCD segments, up to 8 LED warning icons which allow the equipment designer to define critical parameters and to choose appropriate notification methods.
- ▶ Optional IP65 sealed front panel buttons allow direct access to vehicle controller/CAN network.
- ▶ Reliable, all solid-state design means no moving parts minimizing warranty costs.
- ▶ Mounting bracket and integrated connector lowers installation and production costs and eliminates traditional mounting hardware kits.
- ▶ Aesthetically attractive contemporary look enhances vehicle styling and maximizes readability. Overlays can easily be customized to create a specific brand/ logo identity.
- ▶ Over 40 years of Curtis instrumentation design and manufacturing experience insures products are both innovative and extremely reliable.
- ▶ Curtis global network of sales and technical support provides timely and complete applications support.

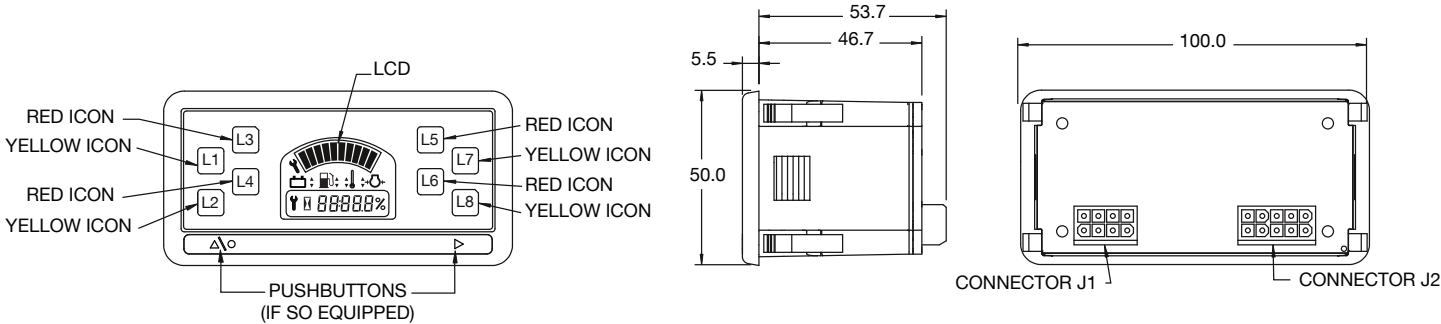
See a 360° view of Model 3100T at:
curtisinstruments.com/360view





Digital Instrumentation: CAN

DIMENSIONS mm

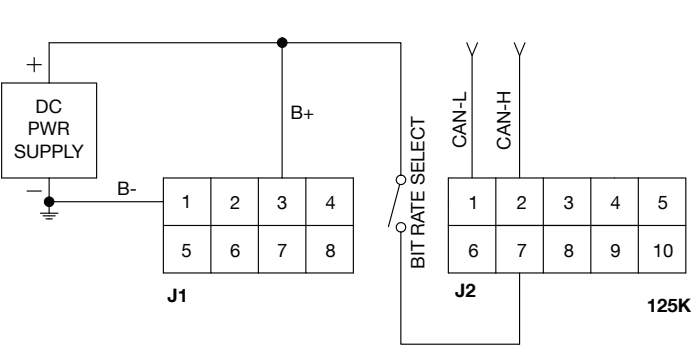


	MOLEX MATING CONNECTORS		AMP MATING CONNECTORS	
	J1	J2	J1	J2
CONNECTOR	MOLEX #39-01-2105	MOLEX #39-01-2085	AMP #794821-1	AMP #794781-1
PIN	MOLEX #39-00-0039		AMP #770904-1	
GASKET			AMP #784772-8	AMP #1-794772-0
WIRE SEAL			AMP #794758-1	

NOTES:

- 1) CASE MATERIAL: ABS/PC BLEND, BLACK
- 2) LENS MATERIAL: POLYCARBONATE
- 3) PANEL CUTOUT SIZE: 45 +.6/-0 X 92 +.8/-0
- 4) ALL SENDER CHARACTERISTICS TO BE DETERMINED

TYPICAL WIRING DIAGRAM



J1

Pin	Description
1	B-
2	No connection
3	B+
4	No connection
5	No connection
6	No connection
7	No connection
8	No connection

J2

Pin	Description
1	CAN-H
2	CAN-L
3	No connection
4	No connection
5	No connection
6	No connection
7	No connection
8	No connection
9	No connection
10	No connection



Digital Instrumentation: CAN

MODEL CHART

Model	Sequence Number
3100T	-000X

SPECIFICATIONS

QUALITY COMPLIANCE

Manufactured under ISO 9001 certified Quality Management system. UL recognized & CE certified.

Operating Voltage Range

12-48VDC nominal (9 to 60VDC)

Operating Temperature

-40°C to +85°C

Storage Temperature

-50°C to +90°C

Humidity

95% RH (non-condensing) at +38°C

ShockSAE

J 1378 March 83. Amplitude 44-55g, half sine, 9-13ms duration

Vibration

SAE J 1378 Double amplitude of 1.53mm with frequency sweep for 10-80-10 Hz (20g max) at 1 minute intervals

Sealing

IP-65 (face), IP-40 (rear Molex), IP-65 (rear AMP with connector installed)

Maximum Current Rating

140mA @ 60VDC (Maximum current draw listed based upon all icons illuminated. Each icon draws 15mA.)

OPTIONS & ACCESSORIES

17633800-01 – AMP Based Installation Kit

Includes a pre-assembled mating connector with over 5" of crimp-connect terminated wires and an installation booklet.

17633800-02 – Molex Based Installation Kit

Includes a pre-assembled mating connector with over 5" of crimp-connect terminated wires and an installation booklet.

17633307 – Mounting Bracket.

12690AMPkit10 – AMP mating connector kit (10 pin)

Includes a connector housing, pins, seals.

12690AMPkit8 – AMP mating connector kit (8 pin)

Includes a connector housing, pins, seals.

WARRANTY Two year limited warranty from time of delivery.

The Curtis Difference
You feel it when you drive it



is a trademark of Curtis Instruments, Inc.

Specifications subject to change without notice

©2016 Curtis Instruments, Inc.

50170 Rev A 2/16