



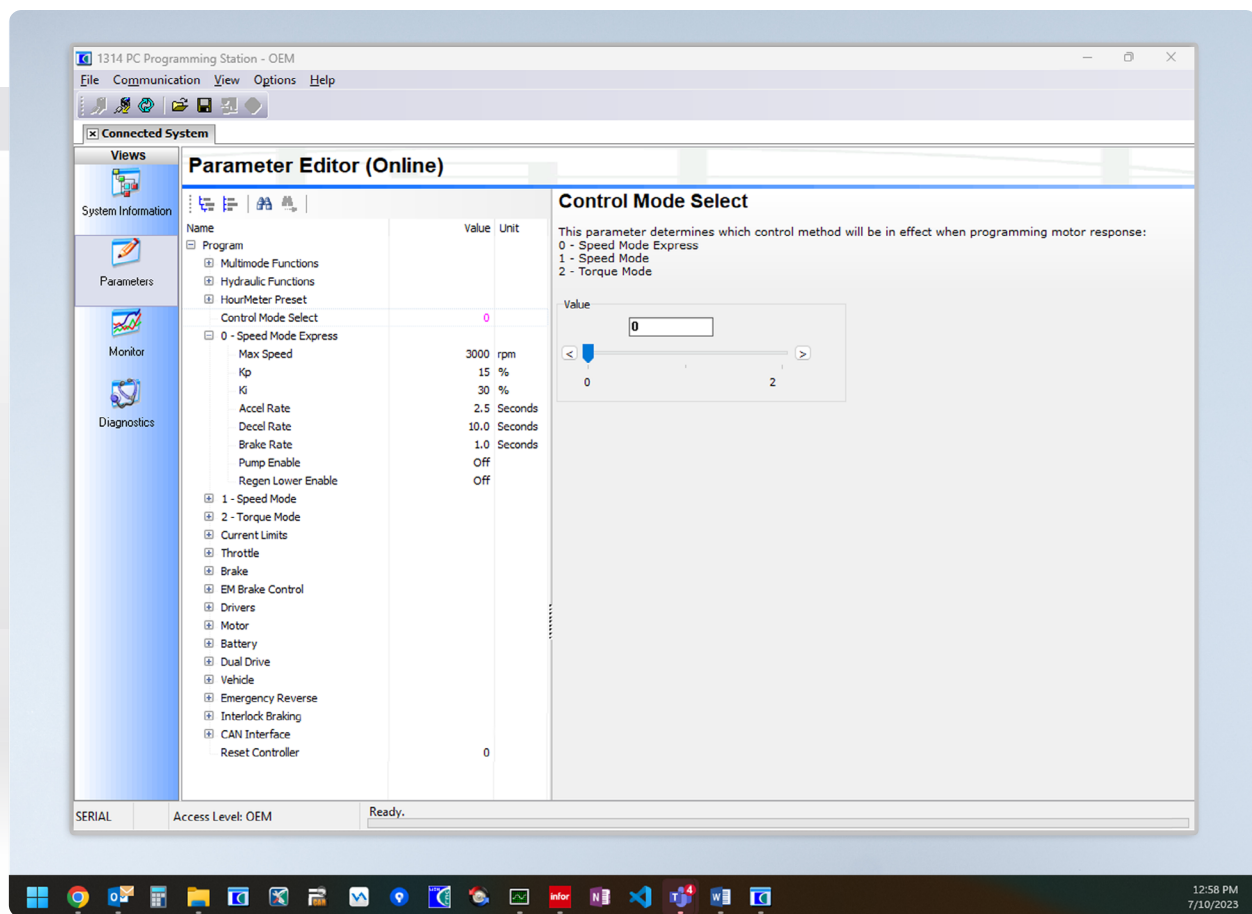
CURTIS

A KOHLER COMPANY

Accessories

# PC Programming Station for Curtis Programmable Devices

## Model 1314 - Version 4.x.x



# Model 1314 - Version 4.x.x

## PC Programming Station for Curtis Programmable Devices

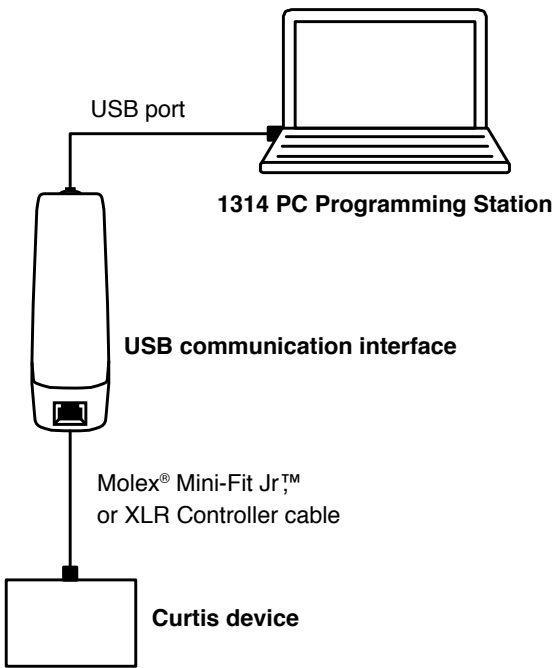


The 1314 PC Programming Station provides comprehensive and intuitive programming, monitoring and system diagnostics for all Curtis programmable motor speed controllers and control systems.

The 1314 PC Programming Station is intended for use by vehicle OEMs, dealers, and service engineers. It provides a powerful Windows interface for adjusting settings, troubleshooting, and recording the parameters of any Curtis speed controller or auxiliary device.

### FEATURES

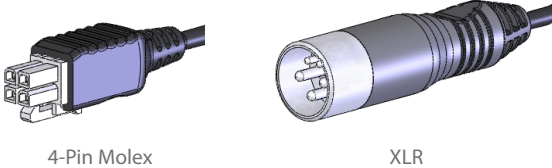
- ▶ View and adjust controller programmable parameters.
- ▶ Real-time monitoring of system variables such as voltage, temperature, and current.
- ▶ Saves all data – parameter values, monitor values, history logs, etc. – in a single file.
- ▶ Logs system variable values for specified intervals.
- ▶ Clone data between controllers.
- ▶ View active fault codes and system timers.
- ▶ View and clear controller fault history log.
- ▶ Online help and automatic update function.



### MODEL CHART

Model Number	Part Number	Description	Comments
1314K-4401	17748700	OEM	Kit includes: USB drive, USB interface, Molex cable
1314K-3301	17748701	Dealer	Kit includes: USB drive, USB interface, Molex cable
1314K-2201	17748702	Service	Kit includes: USB drive, USB interface, Molex cable
1314K-1101	17748703	User	Kit includes: USB drive, USB interface, Molex cable

Cable Options	Part Number
Cable 4-Pin Molex	16185
Cable XLR	36378005



# Model 1314 - Version 4.x.x

PC Programming Station for Curtis Programmable Devices



## TYPICAL PROGRAMMING SCREENS

Views

System Information

Parameters

Monitor

Diagnostics

### System Information (Online)

**123XEGeneric**

Model:	123XEGeneric
Serial Number:	116831
Protocol Version:	2
Parameter Block Version:	0
Model Number:	12322323
Mfg Date Code:	16061
Hardware Version:	1.077
OS Version:	37
Build Number:	125
SM Version:	2.10
Param Blk Version:	1.01
VCL App Version:	1.14
Vehicle Serial Number:	12865

Views

System Information

Parameters

Monitor

Diagnostics

### Parameter Editor (Online)

Name

Value

Unit

Program		
+ Multimode Functions		
+ Hydraulic Functions		
+ HourMeter Preset		
Control Mode Select	0	
0 - Speed Mode Express		
Max Speed	3000	rpm
Kp	15	%
Ki	30	%
Accel Rate	2.5	Seconds
Decel Rate	10.0	Seconds
Brake Rate	1.0	Seconds
Pump Enable	Off	
Regen Lower Enable	Off	
+ 1 - Speed Mode		
+ 2 - Torque Mode		

#### Control Mode Select

This parameter determines which control method will be in effect  
0 - Speed Mode Express  
1 - Speed Mode  
2 - Torque Mode

Value

0

< 0 2 >



TYPICAL PROGRAMMING SCREENS

continued

Views

System Information

Parameters

Monitor

Diagnostics

Monitor (Online)

Monitor

Inputs

Outputs

Analog Out

Digital Out 6

Digital Out 7

Driver 1 PWM

Driver 2 PWM

Driver 3 PWM

Driver 4 PWM

PD PWM

PD Current

5 Volts

12 Volts

Ext Supply Current

Pot Low

Battery

Motor

Controller

Value

Unit

Watch List

Watch	Value	Unit
Inputs   Throttle Command	0.0	%
Inputs   Brake Command	0.0	%
Motor   Motor RPM	0	rpm
Motor   Temperature	200	deg C
Controller   Current (RMS)	0.3	Ampere
Controller   Temperature	-50	deg C

Views

System Information

Parameters

Monitor

Diagnostics

Diagnostics (Online)

Active Faults

Error History

Actual system errors

Error Text	Error Description
Motor Temp Sensor Fault	
Main Open/Short	

WARRANTY

Two year limited warranty from time of delivery.

The Curtis Difference

You feel it when you drive it

© Curtis is a registered trademark of Curtis Instruments, Inc.

© Kohler is a registered trademark of Kohler Co.

Specifications subject to change without notice.

©2024 Curtis Instruments, Inc.

50114 REV G 1/24

www.curtisinstruments.com

4